



Red Valve Company, Inc.

Red Valve Company

Case Study

Multitude of Red Valve products used to remove oil from groundwater

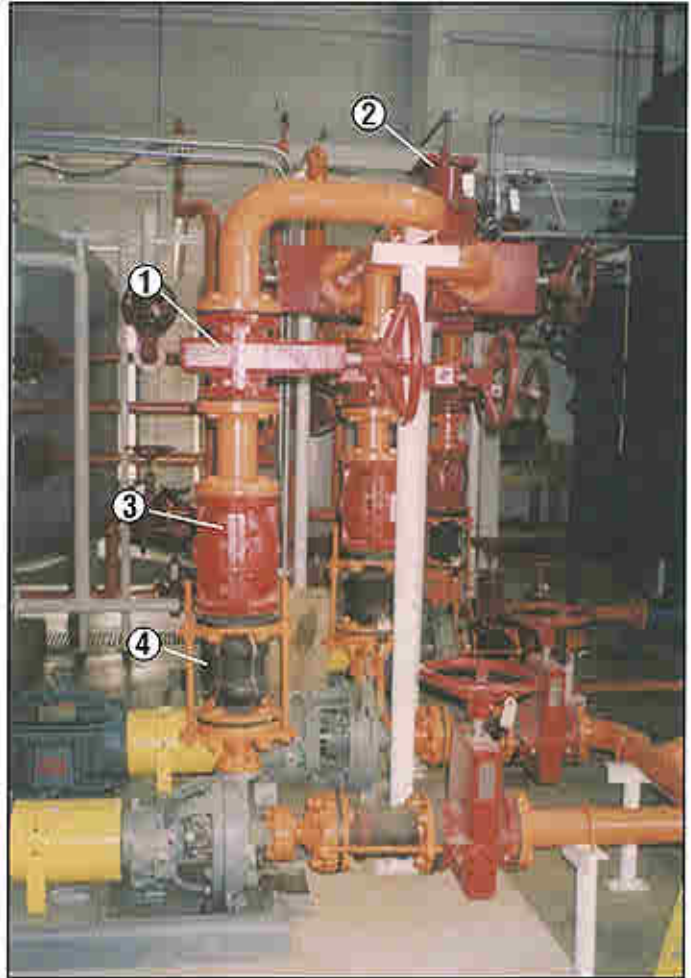
The Yorktown Naval Station, Yorktown, VA, maintains several underground refueling tanks that have been obsolete for more than 100 years. The tanks contain thick, barely refined oil that leaks into the ground, causing high degrees of contamination in the groundwater flowing into the Chesapeake Bay.

In 1996, the station called on OHM Remediation, Trent, NJ, for the design and construction of a groundwater remediation plant that would clean the surrounding soil and improve the quality of the site's runoff. The challenge lay in the abrasiveness of the thick slurry, which is only refined to one level above crude oil.

To address that challenge, OHM Remediation standardized on Red Valve's elastomer-based products for their proven abrasion resistance and reliability. The installation list consisted of Control and Manual Pinch Valves, Tideflex® InLine Check Valves, Redflex® Expansion Joints and Pressure Sensors.

Red Valve's total-system approach at the Yorktown Naval Station's groundwater remediation plant provides the end user with a multitude of advantages that are characteristic of its wide range of quality products. At the inlet and outlet sides of all pumps, Red Valve Manual Pinch Valves(1) provide a bi-directional, drop-tight shutoff for safe and reliable isolation. Series 5200 Control Pinch Valves(2) are also installed, featuring rugged, abrasion-resistant elastomer sleeves that provide accurate throttling of the thick, barely refined oil, which may contain a high concentration of grit and sand.

A Series 39 Tideflex® InLine Check Valve(3) on the vertical pipe protects against fluid backflow during a plant shutdown. The patented Duckbill® design creates a fool-proof unidirectional shutoff mechanism. Redflex® Rubber Expansion Joints(4) are installed throughout the



Red Valve's elastomer products are ideal for handling the oil in this service, which is refined only one grade above crude oil.

plant to absorb vibration. They feature a rugged, elastomer construction for excellent long-term performance, even when handling thick, abrasive slurries. The full-ported, non-clogging design of Red Valve Pressure Sensors is further protecting the remediation plant against costly maintenance problems.